

EN

contact[®]
Auszeichnungssysteme



**User manual
premium labeller**

Links:

Label roll change for contact premium labeller:

<https://www.youtube.com/watch?v=V-4gl-duMbbQ>



Ink roll change for contact premium labeller:

<https://www.youtube.com/watch?v=XDf-p9v76WwQ>



Further information can be found at:

<http://www.contact-online.de/en/service/brochures/>



Contents

1	Product function.....	4
1.1	Function.....	4
1.2	Use.....	4
1.3	Structure	4
2	About this manual.....	10
2.1	Target group	10
2.2	Purpose of manual	10
2.3	Explanation of symbols.....	10
2.4	Manual retention.....	10
3	General safety	12
3.1	Warnings	12
3.2	Intended use	14
3.3	Foreseeable misuse.....	14
3.4	Obligations of operating company.....	14
3.5	Obligations of user	14
4	Product design	16
4.1	EU declaration of conformity.....	16
4.2	Transport.....	16
4.3	Storage	16
4.4	Dimensions and weight.....	18
4.5	Assembly.....	18
5	Using product.....	20
5.1	Setting price code.....	20
5.2	Labelling	22
5.3	Troubleshooting.....	24
5.4	Disposal	24
6	Product care.....	26
6.1	Cleaning	26
6.2	Replacing parts	26
6.3	Changing ink roll	28
6.4	Changing label roll	32
6.5	Changing cliché-slide	38
7	Consumables and accessories	41
7.1	Label rolls.....	41
7.2	Ink rolls.....	41
7.3	Cliché-slides	43

1 Product function

1.1 Function

The labeller prints and dispenses labels.

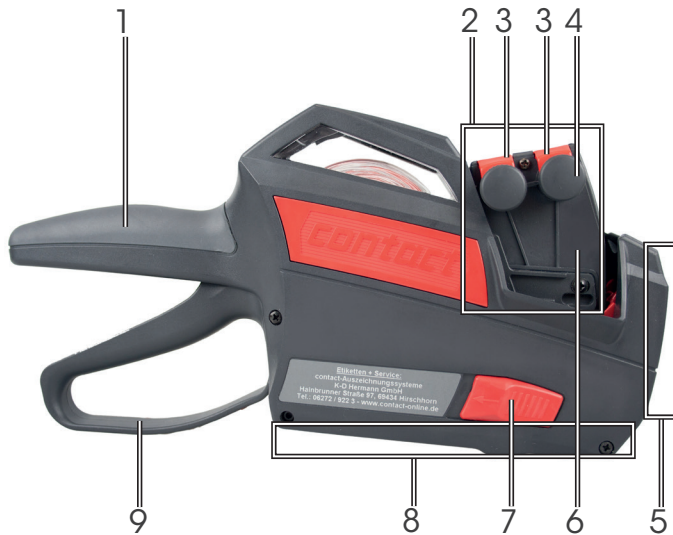
1.2 Use

The labeller is designed for one-handed operation.

Use only genuine *contact* label rolls and genuine *contact* ink rolls. This will prevent malfunctions and damage to the labeller; see Chapter "7 Consumables and accessories" on page 41.

1.3 Structure

Closed labeller



1. Handle-grip
2. Printhead
3. Pointer
4. Adjustment knob
5. Closed front plate
6. Printhead housing
7. Cap
8. Closed bottom
9. Grip

Figure 1 Labeller closed – side view



1. Transportation wheel
2. Guide pulley
3. Guide pins
4. Applicator roller

Figure 2 *Labeller closed – bottom*



1. Opening of pointer
2. Pointer
3. Adjustment knob
4. Cliché-slide in cliché-slot (optional accessory)

Figure 3 *Labeller closed – printhead*

Open labeller



Figure 4 Labeller open - front plate



Figure 5 Labeller open - bottom



2 About this manual

2.1 Target group

Users of the labeller must be at least 16 years old.

The labeller is intended for use in the commercial sector only.


2.2 Purpose of manual


This manual will help you use the labeller safely and efficiently.

Read through the manual carefully before using the labeller.

2.3 Explanation of symbols

Safety-relevant information

 **CAUTION** Indicates a potentially dangerous situation which can lead to minor or moderate injuries.

 **NOTICE** Indicates a situation which can lead to material damage.

 indicates further information/notes/tips.

Actions

1. Action step (numbered)
 - ♦ Intermediate result
 - ✓ Final result

Enumerations

- Level 1
 - Level 2

2.4 Manual retention

Keep this manual in a safe place. Make the manual available to all users of the labeller.

If the labeller is sold on, pass on the manual to the new owner.

3 General safety

3.1 Warnings

CAUTION

Risk of injuries due to broken parts. Never unscrew the labeller. If you suspect a fault, return the labeller to the manufacturer. Use the original packaging. Broken parts may cause injury.

Risk of crushing to fingers/skin due to lack of attention. Move the adjustment knob using your thumb and index finger. Otherwise you may suffer pinching injuries to your skin.

Close the bottom/front plate with the palm of your hand. Otherwise you may suffer pinching injuries to your fingers/skin.

Risk of cuts at the tear-off edge. Take care when removing and inserting the label roll. At the bottom of the labeller is a jagged tear-off plate on which you could injure yourself.

Risk of foot injuries due to the labeller falling. Always wear closed footwear when using the labeller. Avoid working in bare feet/sandals.

Pain or other signs of fatigue may occur if the device is used for long periods. Take sufficiently long breaks when working with the labeller.

Risk of toxic/combustible vapours in the event of high ambient temperatures. Do not place the labeller and the consumables (labels and ink rolls) on hot surfaces.

NOTICE

Risk of damage to the labeller due to improper cleaning. Do not use corrosive cleaning agents. Use only water and a soft cloth for cleaning.

Risk of damage to the labeller due to improper handling. Never remoisten the ink rolls. If there is no longer sufficient ink in the ink rolls, change the ink rolls; see Chapter "6.3 Changing ink roll" on page 28.

Excessive temperatures may affect handling and the results of the labelling. Where possible, use the labeller and consumables (labels and ink rolls) at room temperature. Store the labeller and consumables at room temperature. Incorrect storage can have an adverse effect on the use of consumables. Contact the manufacturer if you intend to use and store the labeller at other temperatures (e.g. low-temperature applications).

Fouling caused by ink possible. Take care when handling the ink roll. Contact the manufacturer for further information or specifications relating to the ink rolls. Ink in the ink rolls can stain.

3.2 Intended use

The labeller is designed for printing and dispensing labels.

Use only genuine *contact* ink rolls for printing the labels.

Use only genuine *contact* label rolls in the intended size.

The label size depends on the labeller variant; see Chapter "4.4 Dimensions and weight" on page 18.

3.3 Foreseeable misuse

Use of the labeller for purposes other than or in addition to those described under "Intended use" is deemed improper.

This applies in particular to using the labeller with incorrectly sized labels, incorrectly sized printhead, incorrectly sized bottom, etc.

3.4 Obligations of operating company

The labeller is intended for use in the commercial sector. The operating company must observe the legal obligations regarding occupational safety.

The operating company must

- ensure that the manual is available to the user of the labeller at all times and
- obtain a replacement manual from the manufacturer if the original manual becomes illegible or is lost.

The operating company must ensure that all persons who use the labeller

- are at least 16 years old,
- are familiar with the regulations concerning occupational safety and accident prevention,
- have been instructed in how to use the labeller and
- have understood the safety instructions and safety rules given in this manual.

3.5 Obligations of user

The labeller may only be used by persons who

- perform their work reliably,
- have read and understood this manual and

- do **not** exhibit slowed reactions, e.g. caused by drugs, alcohol or medication.

4 Product design

4.1 EU declaration of conformity

Manufacturer

K-D Hermann GmbH
Hainbrunner Strasse 97
69434 Hirschhorn

D-Germany

Representative
Product

Martin Hermann, Managing Director
Labeller - premium
For printing and dispensing labels.
EU Machinery Directive 2006/42/EU

Fulfils the requirements of the directives
Fulfils the harmonized standards

- EN ISO 12100-1-2:2003
- EN ISO 14121-1:2007
- EN 614-1:2006+A1:2009
- EN 1005-3:2002+A1:2008
- EN 1005-5:2007-05
- EN 1010-1:2004+A1:2010

4.2 Transport

The manufacturer itself does not deliver the product.

The product is shipped by a transport service provider.

4.3 Storage

NOTICE Excessive temperatures may affect handling and the results of the labelling. Where possible, use the labeller and consumables (labels and ink rolls) at room temperature. Store the labeller and consumables at room temperature. Incorrect storage can have an adverse effect on the use of consumables. Contact the manufacturer if you intend to use and store the labeller at other temperatures (e.g. low-temperature applications).

Store the labeller in its original box.

Temperature min. [°C]	16
Temperature max. [°C]	23
Humidity [% rel. humidity]	40 ... 70

① Contact the manufacturer for further information or specifications relating to the ink rolls and label rolls.

4.4 Dimensions and weight

ⓘ Depending on the character size and number of lines, the printhead has between

4 and 20 digits.

Labeller

	<i>contact</i> premium
Length [mm]	250
Width [mm]	60
Height [mm]	125
Weight [g]	400
Printhead lines	1 or 2

Label sizes

Circle Ø [mm]	14
Rectangle l x w [mm]	18x11
	18x12
	22x12
	25x12
	26x12
	22x16
	25x16
	26x16

Oval l x w [mm]	22x16
	25x16
Wavy edge l x w [mm]	22x12
	25x12
	26x12
	22x16
	25x16
	26x16
<i>contact</i> wavy edge l x w [mm]	25x12
	26x12

4.5 Assembly

CAUTION

Risk of injuries due to broken parts. Never unscrew the labeller. If you suspect a fault, return the labeller to the manufacturer. Use the original packaging. Broken parts may cause injury.

The labeller is delivered fully assembled.

5 Using product

5.1 Setting price code

Set the price code as follows:



Figure 6 Selecting position



Figure 7 Setting value



Figure 8 Pushing back adjustment knob

ⓘ Hold the labeller securely in one hand by the handle-grip. Do **not** operate the grip.

1. Pull the adjustment knob out until the opening of the pointer is at the desired digit.

2. Turn the adjustment knob to the desired value.

3. Repeat steps 1 and 2 until the entire price code is set.

ⓘ Depending on the variant, you can set 1 to 2 lines.

4. **⚠ CAUTION Risk of crushing to fingers/skin due to lack of attention.** Move the adjustment knob using your thumb and index finger. Make a fist with your other fingers. Otherwise you may suffer pinching injuries to your skin. Push the adjustment knob back toward the printhead housing.

✓ The price code is set.

5.2 Labelling

Apply a label as follows:

1. Hold the labeller securely in one hand by the handle-grip.



Figure 9 Operating grip



Figure 10 Releasing grip



Figure 11 Affixing label

2. Operate the grip.
 - ✦ The label is printed.

3. Release the grip.
 - ✦ The printed label is dispensed.

4. Affix the printed label to the desired surface.
5. Repeat steps 2 to 4 as often as required.
 - ✓ You have applied the labels.

5.3 Troubleshooting

Printing in wrong position

If the label print is not at the intended position, remove and then reinsert the label roll; see Chapter "6.4 Changing label roll" on page 32. Follow the instructions precisely.

Print not clearly legible

Insert a new ink roll; see Chapter "6.3 Changing ink roll" on page 28.

5.4 Disposal

The packaging consists of plastic and cardboard. Separate the components and take them both for proper recycling.

The labeller consists of plastic and metal. Take the labeller for proper recycling.

Cliché-print at wrong position

If the cliché-print is not at the intended position, remove and then reinsert the cliché-slide; see Chapter "6.5 Changing cliché-slide" on page 38. Follow the instructions precisely.

Other problems

Contact the manufacturer.

- ① Contact the manufacturer for information about the materials used.
- ① Notes about proper disposal can be obtained from your local authority.

6 Product care

6.1 Cleaning

i If you suspect a fault, return the labeller to the manufacturer. Use the original packaging.

1. Check the labeller for damage before using it.

2. **NOTICE** **Risk of damage to the labeller due to improper cleaning.** Do not use corrosive cleaning agents. Use only water and a soft cloth for cleaning.

After you have finished using the labeller, clean it with a soft, damp cloth.

6.2 Replacing parts

i Defective parts must be replaced by the manufacturer only.

Return the labeller to the manufacturer. Use the original packaging.

6.3 Changing ink roll

Removing ink roll

Remove the ink roll as follows:

- ① Hold the labeller securely in one hand by the handle-grip. Do **not** operate the grip.



Figure 12 Opening front plate



Figure 13 Removing ink roll

1. Pull the front plate off the labeller with the aid of the notch. To do so, use the thumb of your free hand.
 - Fold the front plate downward.
- ① Hold the front plate so that your index finger and thumb can grip the sides of the swivel arm. You should hold the labeller at the side.
2. **NOTICE** **Fouling caused by ink possible.** Take care when handling the ink roll. Contact the manufacturer for further information or specifications relating to the ink rolls. Ink in the ink rolls can stain. Grip the ink roll by the ribbed holding surfaces. To do so, use the thumb and index finger of your free hand.
3. Remove the ink roll from the swivel arm.
 - ✓ The ink roll has been removed.

Inserting new ink roll

Insert the new ink roll as follows:

Requirement: Front plate is open

1. Open the packaging of the new ink roll (e.g. remove the cardboard from the blister).

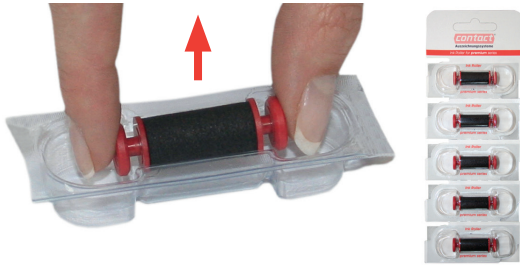


Figure 14 Removing ink roll from packaging



Figure 15 Inserting ink roll



Figure 16 Closing the front plate

- ① Hold the front plate so that your index finger and thumb can grip the sides of the swivel arm.
2. Remove the new ink roll by the ribbed holding surfaces. To do so, use the thumb and index finger of your free hand.
3. Insert the guide pins of the new ink roll into the swivel arm. When doing so, pay attention to the position of the ink roll: parallel to the swivel arm.
4. Push the guide pins into the slot of the swivel arm until the guide pins engage.
 - ✦ The ink roll must then be able to turn only and otherwise not move.
5. **⚠ CAUTION Risk of crushing to fingers/skin due to lack of attention.** Close the bottom/front plate with the palm of your hand. Otherwise you may suffer pinching injuries to your fingers/skin. Push the front plate toward the housing. To do so, place the palm of your hand against the outside of the front plate.
 - ✦ The front plate closes with a "click".
 - ✓ The ink roll is inserted.

6.4 Changing label roll

Removing label roll

Remove the label roll as follows:

- ① Hold the labeller securely in one hand by the handle-grip. Do **not** operate the grip. The bottom must be pointing toward you.



Figure 17 Opening bottom



Figure 18 Removing label roll

1. **⚠ CAUTION Risk of cuts at the tear-off edge.** Take care when removing the label roll. At the bottom of the labeller is a jagged tear-off plate on which you could injure yourself. Cut through the backing paper at the bottom of the labeller.
2. Operate the grip several times.
3. Remove the residual backing paper strip.
4. Slide the 2 red caps at the side toward the grip. To do so, use the thumb and index finger of your free hand.
 - The bottom opens.
5. Fold out the bottom completely.
6. Remove the label roll. To do so, turn the labeller so that the label roll can fall out.
 - ✓ The label roll is removed.

Making new label roll ready for use:

Make the label roll ready for use as follows:

1. Unroll the label roll far enough so that any label residue and adhesive residue can be removed.
2. Tear off the length of label roll which has label residues and adhesive residues.

Inserting label roll:

Insert the label roll as follows:

Requirement: Bottom is open



Figure 19 Inserting label roll



Figure 20 Backing paper behind guide pins

❗ If you are using an already started label roll, skip steps 1 and 2.

✓ The label roll is ready for use.

❗ Hold the labeller securely in one hand by the handle-grip. Do **not** operate the grip.

1. Insert the label roll the right way round:

- The backing paper must be visible.
- A 10-centimetre long strip must project beyond the applicator roller.

2. **CAUTION** Risk of crushing to fingers/skin due to lack of attention. Close the bottom/front plate with the palm of your hand. Otherwise you may suffer pinching injuries to your fingers/skin.

Close the bottom with the palm of your hand.

✦ The bottom closes with a "click".

3. Thread the backing paper behind the guide pins on the bottom.

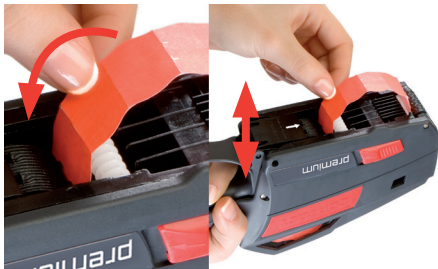


Figure 21 *Backing paper between guide pulley and transportation wheel*

4. Push the end of the backing paper between the white guide pulley and the transportation wheel.
5. Operate the grip several times until the label roll is pulled taut.
 - ✦ The label roll is drawn in.
 - ✓ The label roll is inserted.

6.5 Changing cliché-slide

i The cliché-slide is an optional accessory.

Removing cliché-slide

Remove the cliché-slide as follows:



Figure 22 Push the cliché-slide forward



Figure 23 Pulling out cliché-slide

Inserting cliché-slide

Insert the cliché-slide as follows:



Figure 24 Positioning and inserting cliché-slide

This point is only relevant if a cliché-slide is present.

1. Gently push the cliché-slide with the thumb and index finger of your free hand forwards to the printhead.

2. Pull the cliché-slide upward out of the labeller.
✓ The cliché-slide is removed.

1. Position the cliché-slide in the cliché-slot provided. The smooth side of the cliché-slide must point toward the grip.
2. Insert the cliché-slide into the labeller until the cliché-slide engages. The cliché-slide must not be pushed forward.
 - The cliché-slide engages with a "click".
 - ✓ The cliché-slide is inserted.

7 Consumables and accessories

The manufacturer offers label rolls and ink rolls

in various sizes and for different applications.

7.1 Label rolls

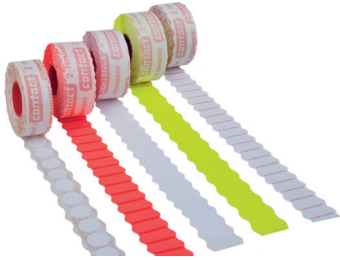


Figure 25 Example of label rolls

The range of different label rolls can be viewed on the manufacturer's website.

<http://www.contact-online.de>

7.2 Ink rolls

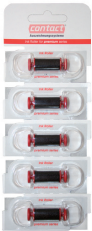


Figure 26 Example of ink rolls in blister

The range of different ink rolls can be viewed on the manufacturer's website.

<http://www.contact-online.de>

7.3 Cliché-slides



Figure 27 Example of cliché-slide



Figure 28 Example of a cliché-print

Contact the manufacturer to order a custom-made cliché-slide.

The cliché-slide is used to additionally print fixed words or texts on the label.

1. Example of cliché-print "Mandarinen".

K-D Hermann GmbH
contact Auszeichnungssysteme
Hainbrunner Straße 97
D-69434 Hirschhorn



Telefon: +49 62 72 / 9 22 - 3 00
Telefax: +49 62 72 / 9 22 - 4 99
info@contact-online.de
www.contact-online.de